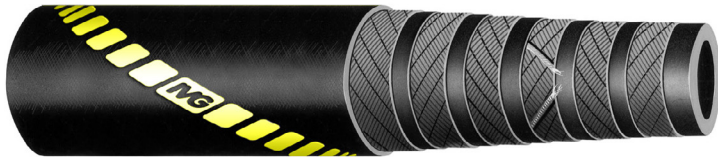
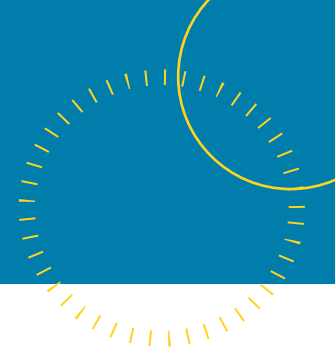


TECHNICAL SPECIFICATION: CS10 BAILEY Bulk Material Delivery Hose



Construction

- Tube:** Black SBR/NR Rubber
- Reinforcement:** Synthetic cord and copper wire
- Cover:** Black synthetic rubber with yellow stripe
- Temperature Range:** -40°C to +70°C

Typical Application:

Cement, baryte and dry powder delivery in offshore applications

Part Number	Inside Diameter		Outside Diameter		Working Pressure		Min. Burst Pressure		Min. Bend Radius	Weight	Cont. Length
	mm	inch	mm	inch	BAR	PSI	BAR	PSI	mm	Kg/m	Mtr
Offshore CS10 Bailey	102	4	123	4.85	10	150	40	600	918	4.03	120
Offshore CS10 Bailey	127	5	148	5.83	10	150	40	600	1143	5.07	120

End fittings and safety accessories available include but are not limited to: API Male Threads, Hammer Unions, Flanges, Camlocks, Victualic Grooved Inserts, Dry Break Couplings, Weaklink/Breakaways, Lifting Hooks c/w safety clamps, lace up and clip on reflective flotation collars.



DET NORSKE VERITAS

TYPE APPROVAL CERTIFICATE

CERTIFICATE NO - TAP00000BJ