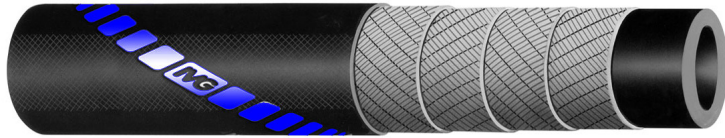
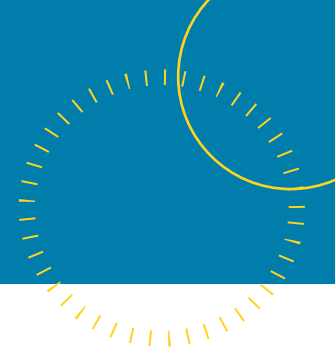


TECHNICAL SPECIFICATION: WS10 TRENT/S Drill Water Delivery Hose



Construction

- Tube:** Black SBR Rubber
- Reinforcement:** Synthetic cord, embedded with copper anti-static wire
- Cover:** Black EPDM rubber with blue stripe
- Temperature Range:** -35°C to +70°C

Typical Application:

Drill water delivery in offshore applications

Part Number	Inside Diameter		Outside Diameter		Working Pressure		Min. Burst Pressure		Min. Bend Radius	Weight	Cont. Length
	mm	inch	mm	inch	BAR	PSI	BAR	PSI	mm	Kg/m	Mtr
Offshore WS10 Trent	102	4	118	4.65	10	150	40	600	918	3.5	120

End fittings and safety accessories available include but are not limited to: API Male Threads, Hammer Unions, Flanges, Camlocks, Victualic Grooved Inserts, Dry Break Couplings, Weaklink/Breakaways, Lifting Hooks c/w safety clamps, lace up and clip on reflective flotation collars.



DET NORSKE VERITAS

TYPE APPROVAL CERTIFICATE

CERTIFICATE NO - TAP00000BJ