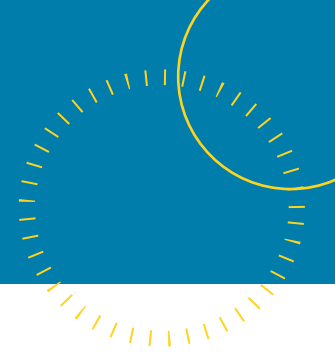


## TECHNICAL SPECIFICATION:

# SNOWDON

## Steel Wire Air Hose

**Application:**

High pressure steel wire reinforced compressed air hose. Designed for applications where a heavy duty hose is necessary.

**Temperature:** From -30°C (-22°F) to + 120°C (+248°F).

**Tube:** Black, smooth, SBR rubber.

**Reinforcement:** Insert of steel wire.

**Cover:** Yellow, smooth, (wrapped finish) synthetic rubber

**Branding:** Continuous blue stripe.

Code	inside Diameter		Outside Diameter		Working Pressure		Burst Pressure		Weight Nominal		Length Max	
	mm	inch	mm	inch	bar	psi	bar	psi	kg/m	lbs/ft	m	ft
1448900	51	2	67	2,64	40	600	200	3000	2,50	1,68	120	400



Hydrasun  
Gateway Business Park  
Moss Road  
Aberdeen  
AB12 3GQ

Tel: +44 (0)1224 618618  
e-mail: [info@hydrasun.com](mailto:info@hydrasun.com)  
[www.hydrasun.com](http://www.hydrasun.com)

